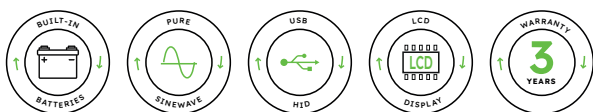


Mantis II Tower

LCD Display Panel



- Ideal for network equipment, NAS, ATM and Kiosks
- Line-interactive UPS with sine wave output
- Cost-efficient solution without compromising the performance
- High conversion efficiency (>95%) results in energy saving
- Automatic boost and buck voltage regulation
- LCD graphic display gives comprehensive information at a glance
- HID-compatible USB port
- Easy battery replacement
- Compact design and easy to install
- CE and UL applicable

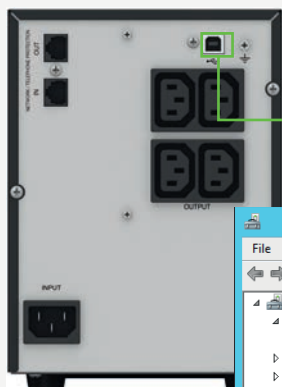


• USB HID

Getting tired of installing monitoring software for UPS? With our UPS featured USB port which supports HID (Human Interface Device) Power Device Class, no more software installation is needed.

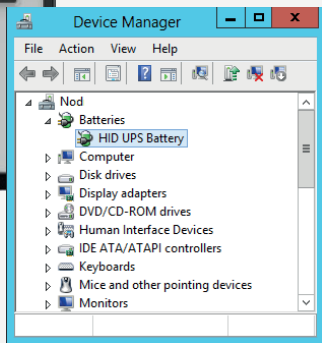
Computer's Operating systems such as Windows/Linux/MAC OS comes with an embedded power management and monitoring function. When such computer connects to a UPS with this feature, the UPS will be automatically recognized by the OS as a "HID UPS Battery".

UPSs with this feature is also ideal as a back-up power for NAS (Network Attached Storage).



HID UPS Battery supported USB Port

Mantis II 500/750 Tower



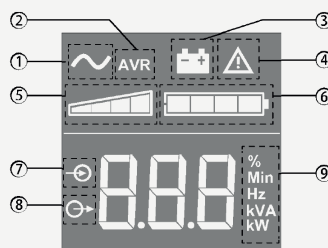
• Hot-swappable battery design

This design ensures clean and uninterruptible power to protected equipment during battery replacement.



User Replaceable Batteries
Hot Swappable function

• User-friendly LCD display



- 1 UPS ON
- 2 AVR mode
- 3 Battery mode
- 4 Internal fault
- 5 Output load level
- 6 Battery level
- 7 Input measurements
- 8 Output measurements
- 9 Measuring unit

Mantis II Tower Selection Guide

MODEL	MANTIS II 500 Tower	MANTIS II 750 Tower	MANTIS II 1000 Tower	MANTIS II 1500 Tower
CAPACITY	500 VA / 350 W	750 VA / 450 W	1000 VA / 700 W	1500 VA / 900 W
INPUT				
Voltage	220/230/240 VAC			
Acceptable Voltage Range	176 - 288 VAC			
Frequency	55Hz			
OUTPUT				
Output Power Factor	0.7	0.6	0.7	0.6
Nominal Output Voltage	220/230/240V _{AC}			
Voltage Regulation (Line Mode)	-10% to +6%			
Voltage Regulation (Battery Mode)	-10% to +6%			
Frequency Range (Battery Mode)	50Hz ± 0.1Hz			
Waveform (Batt. Mode)	Pure sine wave			
EFFICIENCY				
Line Mode	>94%			
AVR Mode	>90%			
Battery Mode	>70%			
BATTERY				
Battery Type & Number	12 V / 9 Ah x 1		12 V / 9 Ah x 2	
Backup Time (@ Typical PC load)	20 min		40 min	
Typical Recharge Time (to 90%)	3 hours			
TRANSFER TIME				
Battery mode <-> Line mode	<10ms			
Display	LCD			
AUDIBLE ALARM	Yes			
PHYSICAL				
Dimension, W x H x D (mm)	150 x 209 x 240 mm		150 x 209 x 340 mm	
Net Weight (kgs)	6.8 kg		11.5 kg	
ENVIRONMENT				
Noise level	<40dBA @ 1 meter		<45dBA @ 1 meter	
Operating Temperature	0-40°C. (non-condensing)			
NEXT PART NUMBERS				
MANTIS II Tower	44240	44233	44234	44235
NEXT 5+ warranty extension	11002	11003	11003	11003

Product specifications are subject to change without prior notice